

# ShoWine

*The best design for your wine...*

# ShoWine



*...in addition to the perfect wine, there is a design cellar...*



# ShoWine



*...simply enhancing what already exists...*



ShoWine



The collaboration between **IGEC** and **SHOWINE** aims to bring the cellar into the private home, the restaurant, and not only, as a place integrated into the environment that is lived every day.

A space dedicated to your wines, to your family, and convivial moments.

A key aspect to achieve all this is the design of this environment dedicated to wine, which must be functional, but also welcoming and engaging for everyone.

**SHOWINE** has been one of the Italian points of reference for wine lovers for years, in the creation of cellars for the conservation of wine, and accessories related to this world.

**IGEC** is a team of interior designers capable of carrying out projects, with the aim of improving people's lives through integrated and sustainable projects.

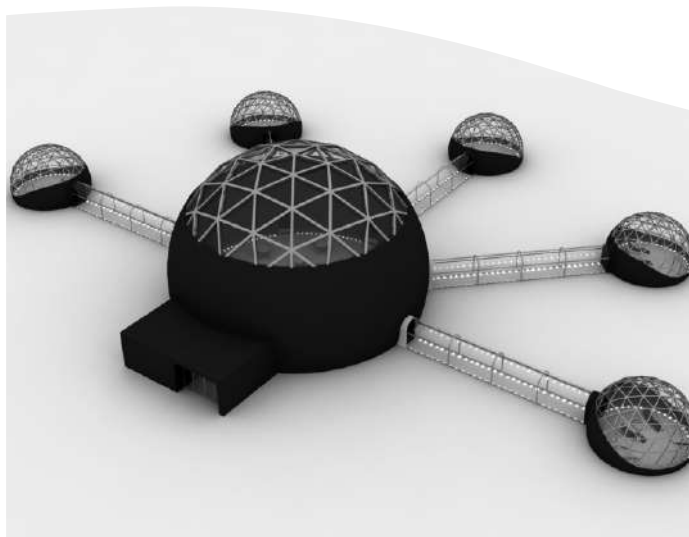
The collaboration between **IGEC** and **SHOWINE** aims to create unique and memorable experiences, enhancing what already exists, and providing a turnkey service for the storage, conservation and display of your wine.

Contact us and we will be able to advise you on how to enhance an existing environment, and transform it into a space to live every day, with family and friends, for unforgettable moments.

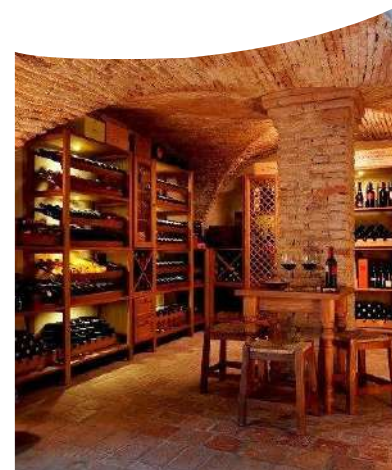
*[www.italian-consulting.com](http://www.italian-consulting.com)*



**FURNISHING  
AND  
ACCESSORIES**



**RESEARCH  
AND  
DEVELOPMENT**



**PROJECTS  
AND  
REALISATIONS**



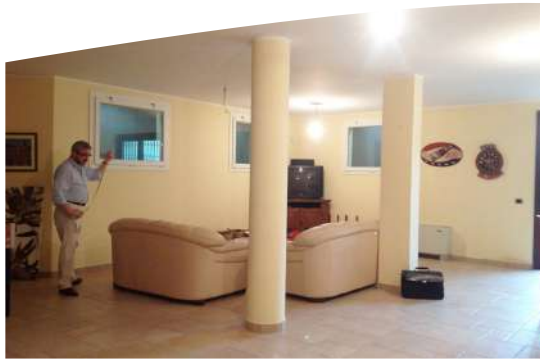


## PROJECTS AND REALISATIONS

## GIAVENO (TO)

*A private residence, where a basement area was turned up in a comfortable "winery" where to taste excellent wines...*

# ShoWine



## GIAVENO (TO)

ShoWine



*...to offer banquets, to play billiards, and relax with family and friends...*





## GIAVENO (TO)

*...a surface of 80 mq transformed in just 5 weeks, respecting time and costs, without loose the designing quality.*

ShoWine



## MANTOVA

# ShoWine



*In the center of Mantova city, the basement of an old palace becomes a private place to spend enjoyable moments...*

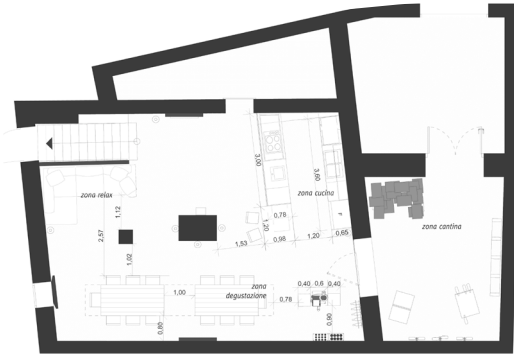


## MANTOVA

ShoWine



*...the starting point of the project was to change the least possible the existent architecture.*

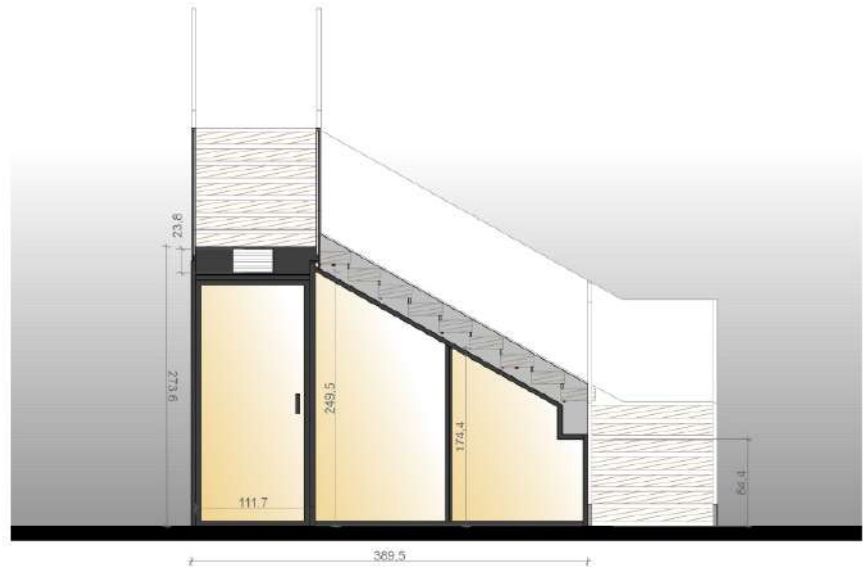


## VENICE

ShoWine



*Inside the Restaurant, at the VJ Marriott Hotel, thanks to minimal structure and displays, bottles become protagonists...*





## VENICE

*...we created a cellar capacity of almost 600 bottles of wine with a stable internal temperature of 14°C...*

# ShoWine



## VENICE

*...this wine cellar become perfectly integrated and, at the same time, a new important focus of the restaurant.*

# ShoWine



**IDA WINERY**

*Volpago del Montello, a red soil hill, which skirts on the north side the Piave river...*

ShoWine



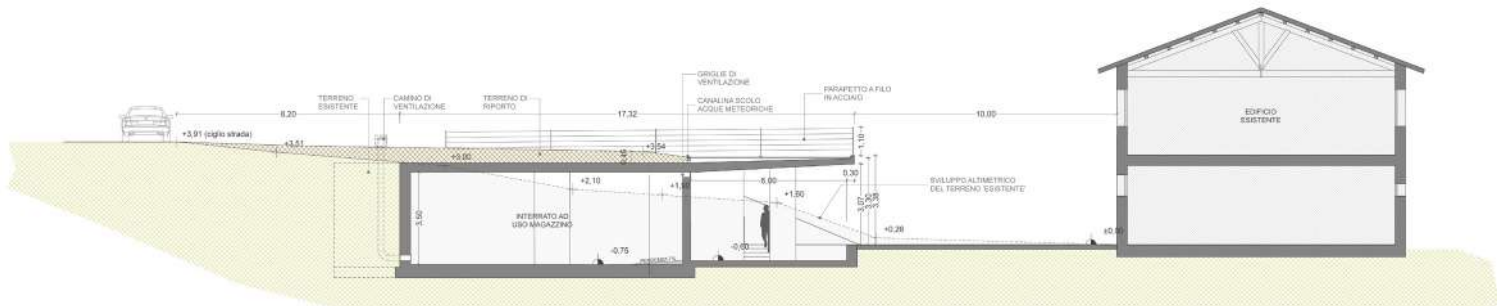


**IDA WINERY**

ShoWine



*...the project consists of the realization of two building, the first is a shed for the necessary equipment to the wine production...*





**IDA WINERY**

*...the second is an underground storage for the successive warehousing of the wine products...*

ShoWine



## IDA WINERY

ShoWine



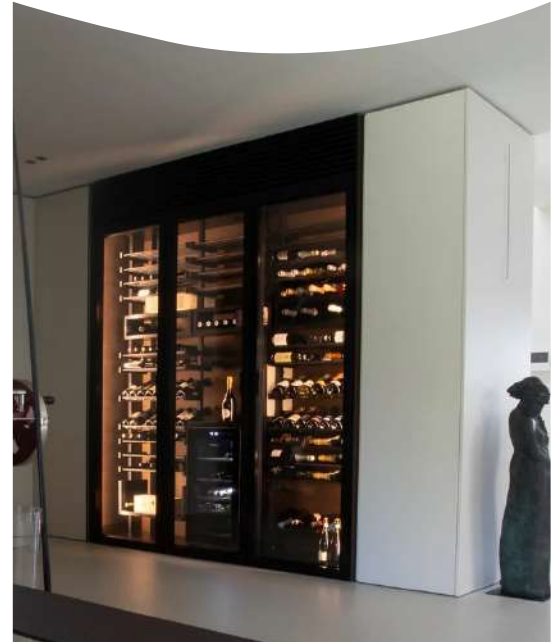
*...both the two buildings are contextualized in the environment thanks to an accurate analysis of the used materials.*



## PRIVATE HOUSE

*Air-conditioned open cellar in living area*

ShoWine

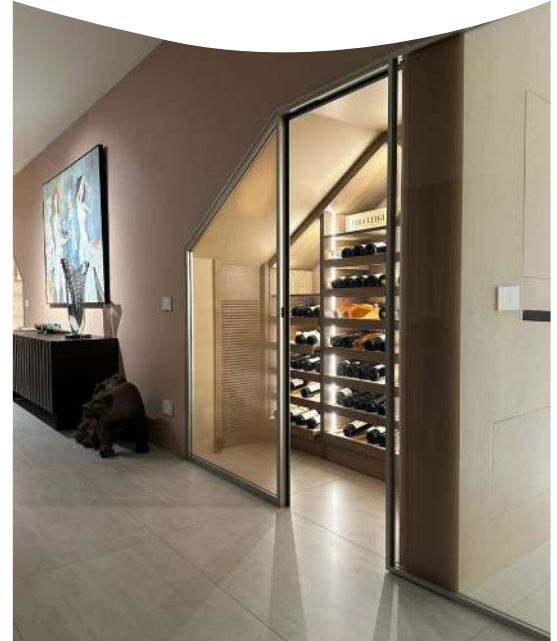




## PRIVATE HOUSE

*Air-conditioned understairs with customized furniture*

ShoWine





## WINE SHOP

*From basement to air conditioned cellar*

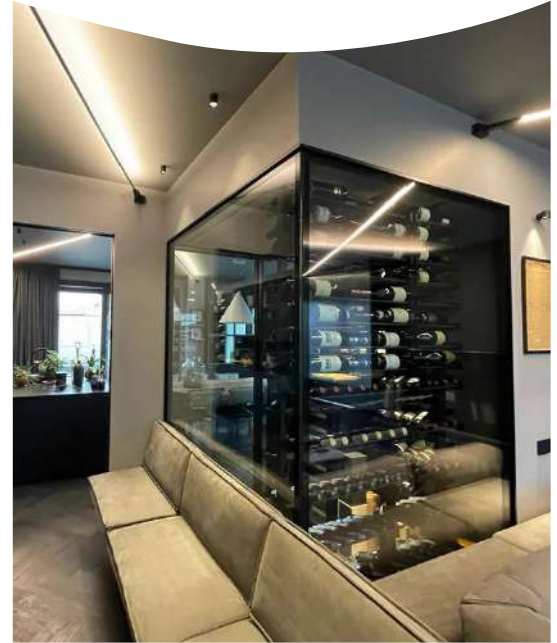
# ShoWine



# PRIVATE HOUSE

*Air-conditioned open cellar*

ShoWine



# PRIVATE WINERY

*Furnishing for a private winery*

ShoWine





# RESTAURANT

*Air-conditioned open cellar*

ShoWine

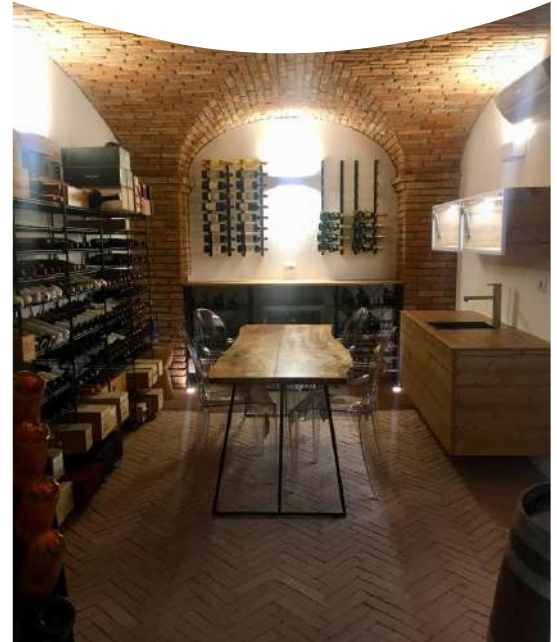




## PRIVATE HOUSE

*From garage to tasting cellar*

# ShoWine



ShoWine



**RESEARCH AND DEVELOPMENT**



## MODULAR WINERY

ShoWine



*The modular project, envisages a great space flexibility for easy reconfigurations and immediate chances ...*

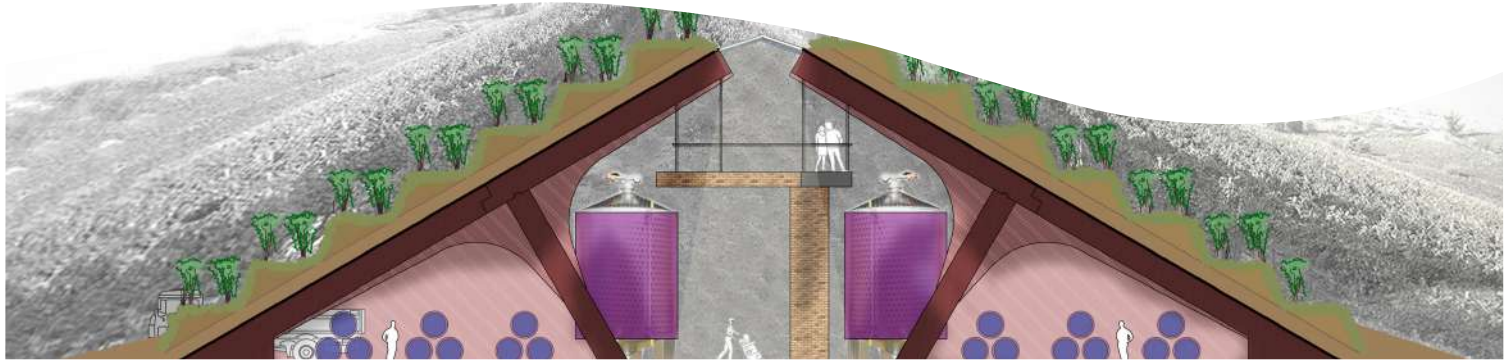


## MODULAR WINERY

ShoWine



*...a key aspect for the success of a wine cellar, which must be functional and welcoming...*



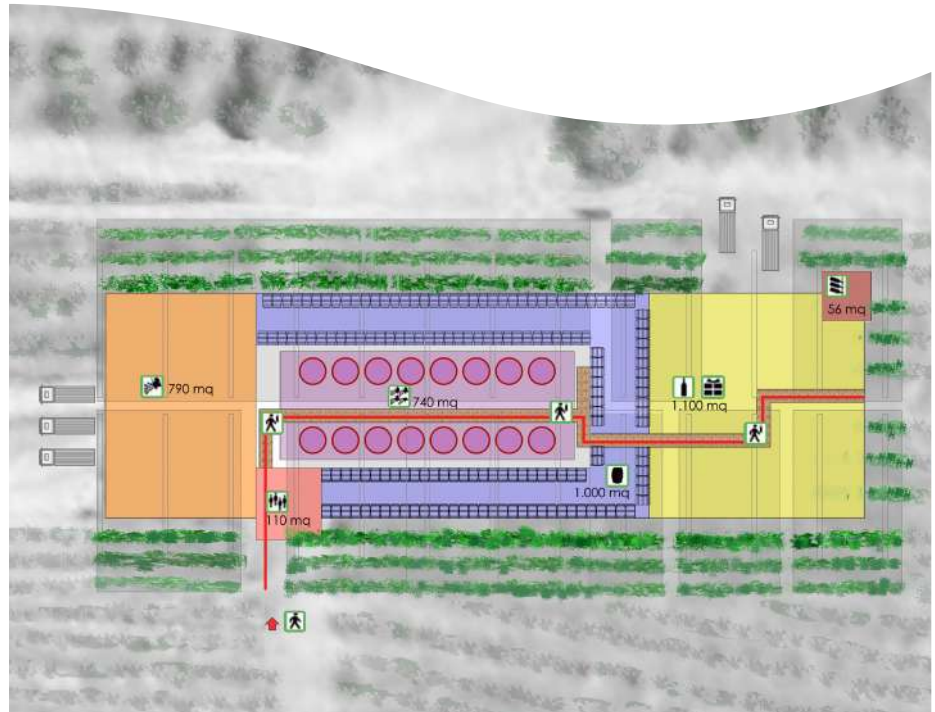
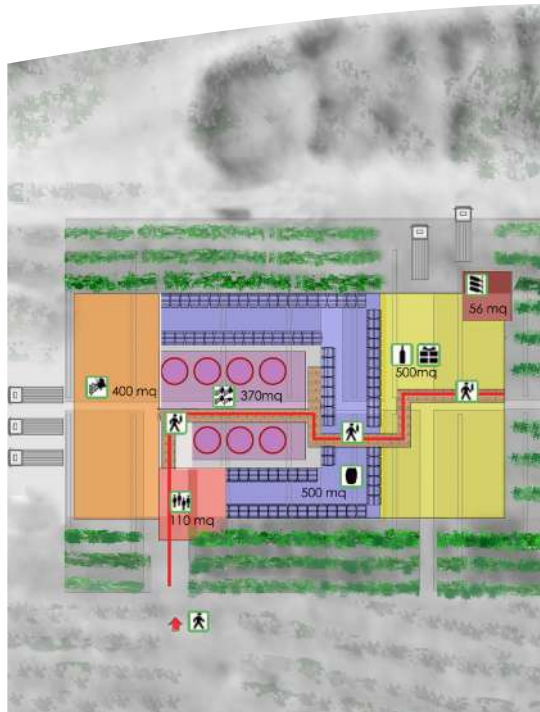


## MODULAR WINERY

ShoWine



*...wine producers will increasingly have to strike a balance between fantasy and practicality for their winery.*



## WINE GALLERY

ShoWine



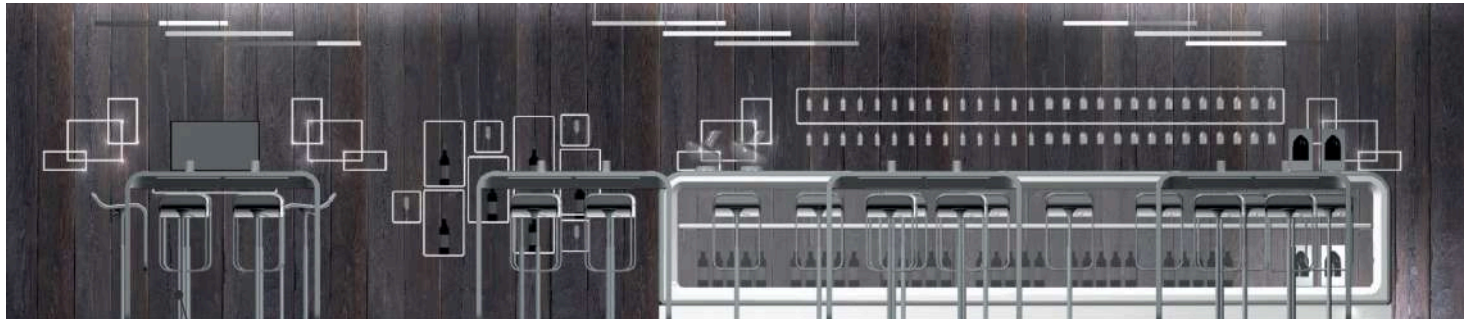
*Place in which to drink good wine, where the combination of tradition and technology characterize an innovative space...*



# WINE GALLERY

*...learn about wine in all its aspects, communicating it as an expression of art and culture.*

# ShoWine

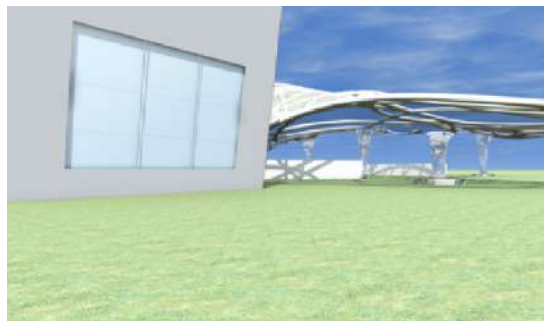
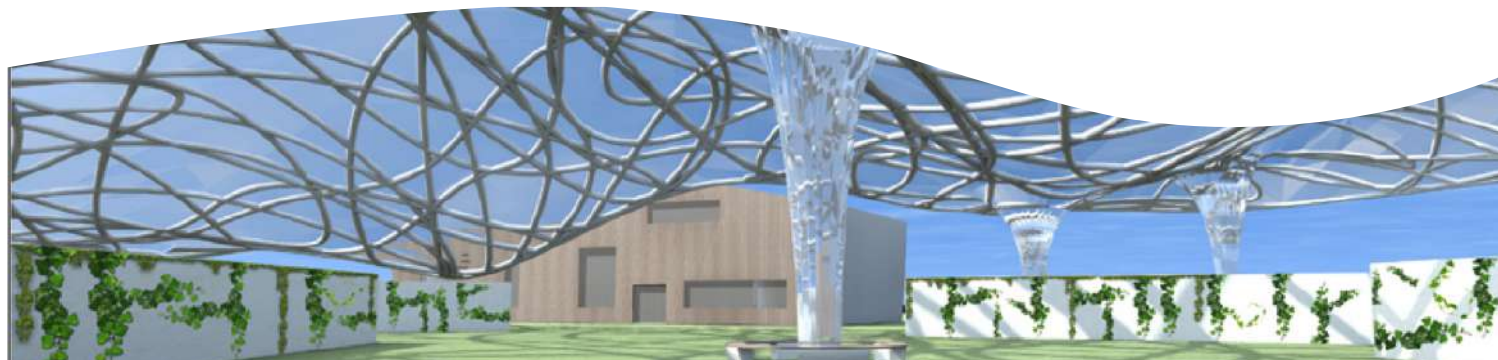


## DIVINE GARDEN

ShoWine



*Create a new and dynamic space that presents a unique and appealing to all kinds of people passionate about wine ...*



Il giardino Divino prevede un percorso all'esterno dedicato ai vigneti: un ritorno al concetto della vendemmia, della raccolta.

Consiste in un percorso fra diversi tipi di vigneti, tutti riconosciuti da una targetta con il nome del vino. Questi vigneti hanno appesi i grappoli sopra descritti, e vengono raccolti dal visitatore nel cestino datogli all'ingresso. Si può anche sostare sulle panchine e godersi una giornata completa vivendo questa nuova esperienza.

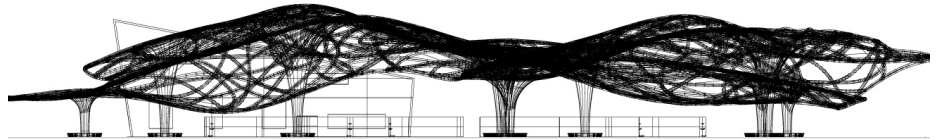
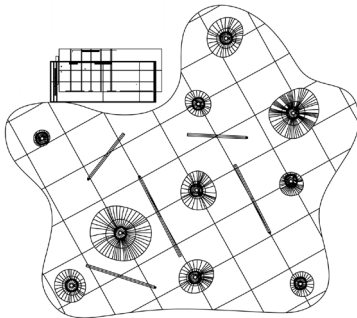
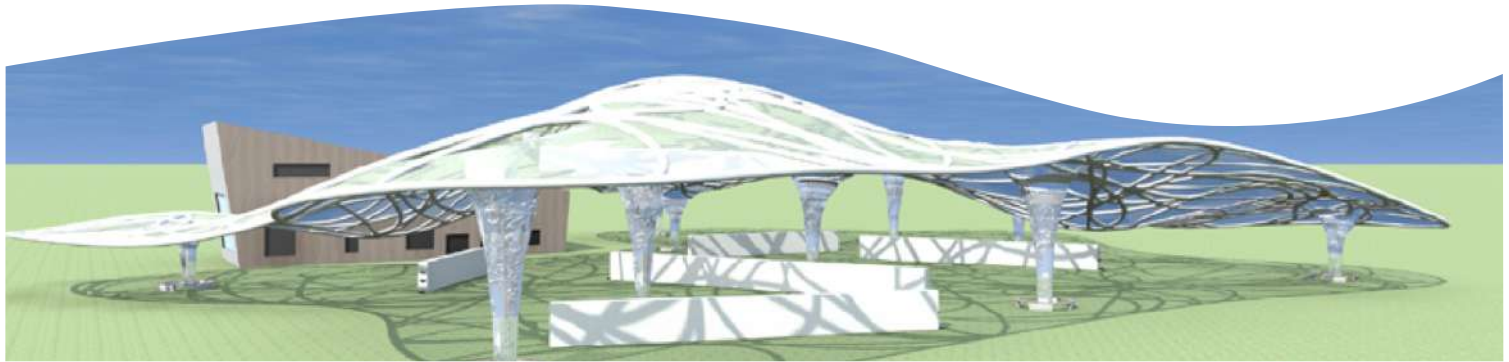
Infine ci si recherà nella sala dedicata alla degustazione.



# DIVINE GARDEN

*...combine nature, history and vanguard in one large space...*

ShoWine



## DIVINE GARDEN

ShoWine



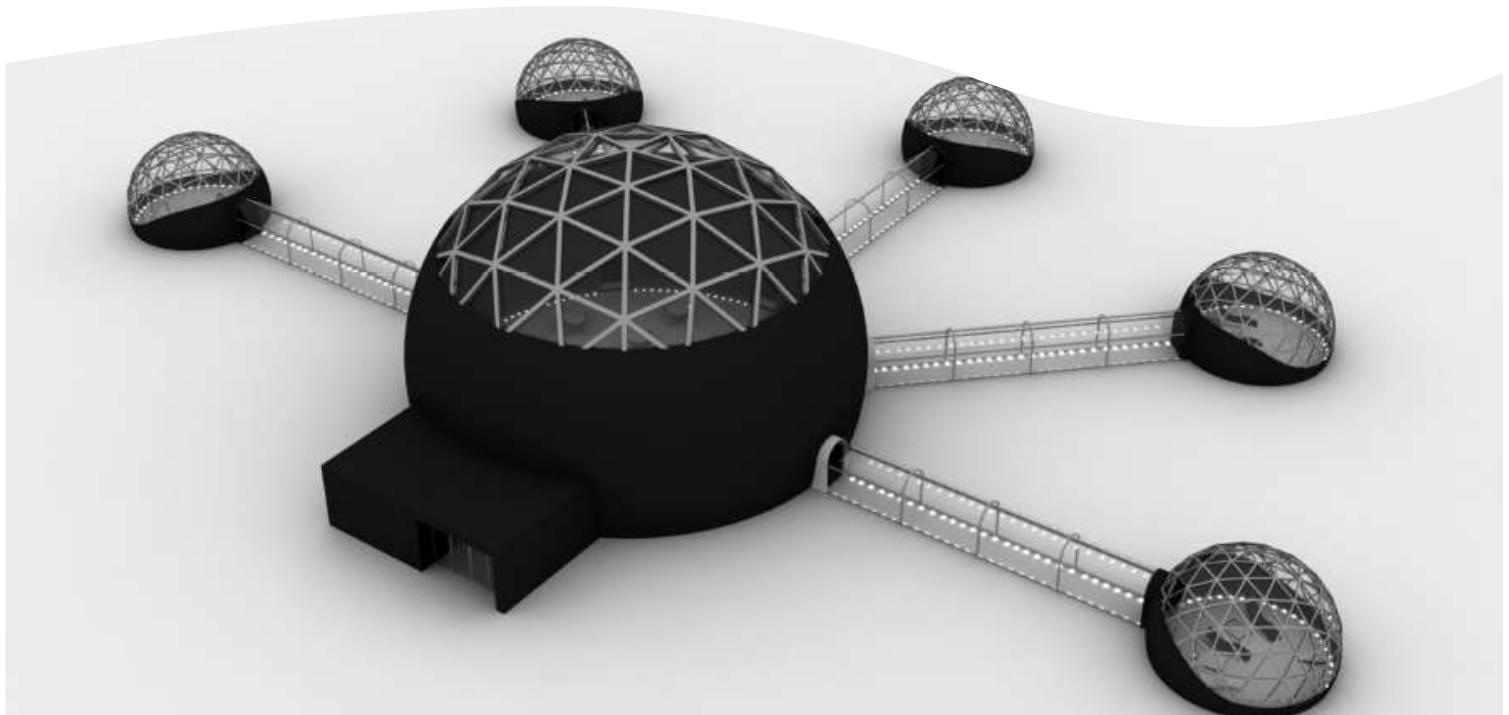
*...an interior space traditional family with a garden created for him to relax and taste the wine directly from grape.*



## GLASSES OF STARS

*I moved away from the city, from its confusion, by the lights, so strong, so disturbing... Here everything is quiet...*

ShoWine

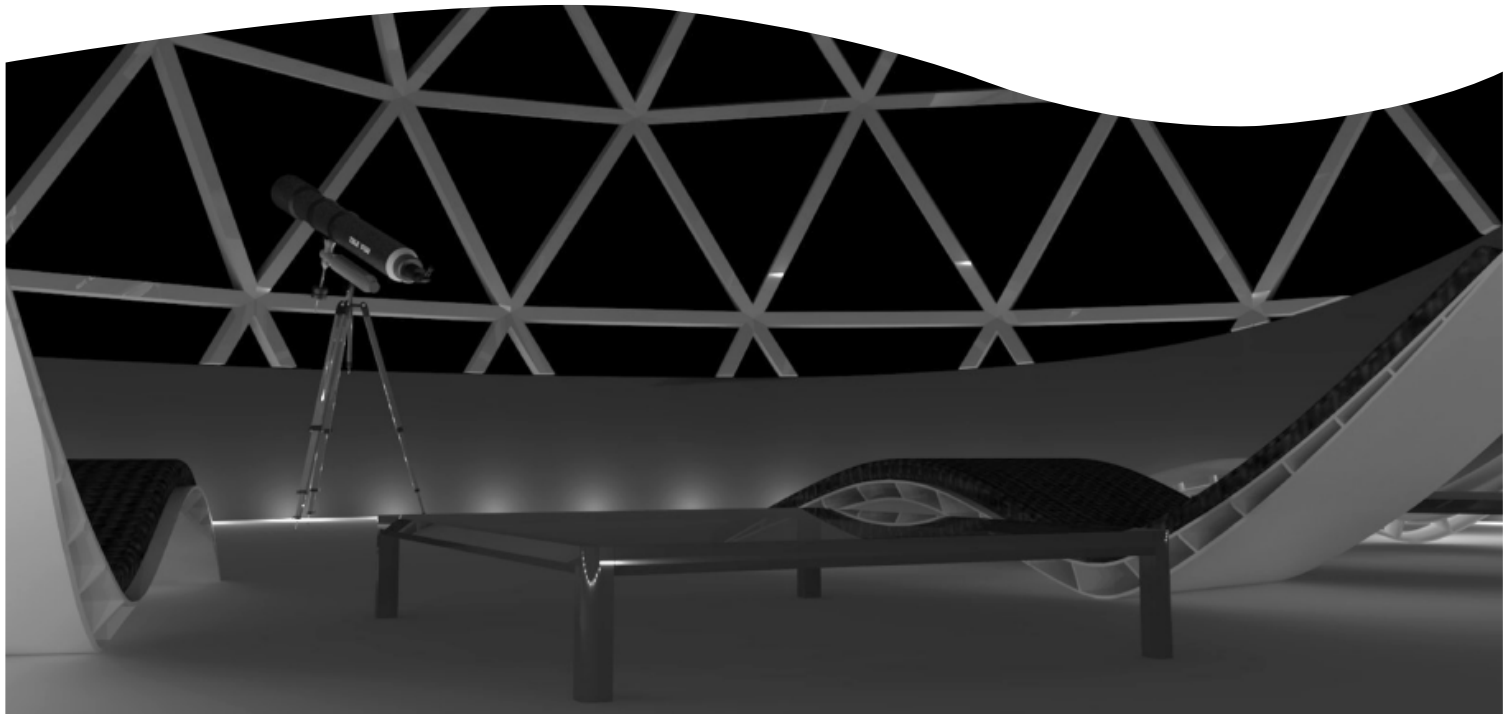


## GLASSES OF STARS

ShoWine



*...glasses of stars born with the desire to to drink a good glass of wine under the stars...*



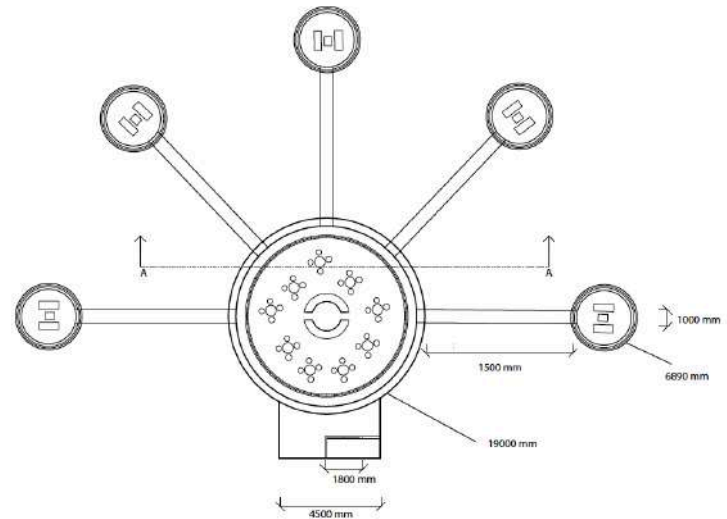
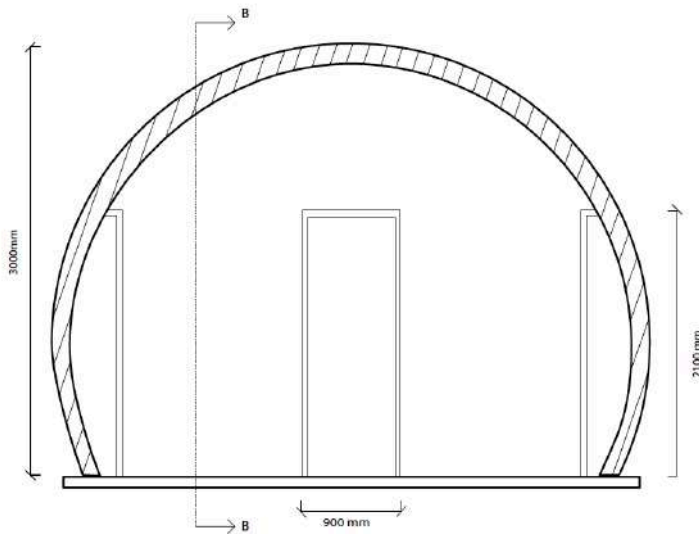


# GLASSES OF STARS

ShoWine



*...by being enveloped in mystery and by the immensity of the sky or the beauty and variability of nature and the seasons.*



ShoWine



**FURNISHING AND ACCESSORIES**

## FURNISHING AND ACCESSORIES

ShoWine



## FURNISHING AND ACCESSORIES

ShoWine





## FURNISHING AND ACCESSORIES

ShoWine



## FURNISHING AND ACCESSORIES

ShoWine



## FURNISHING AND ACCESSORIES

ShoWine





## FURNISHING AND ACCESSORIES

ShoWine





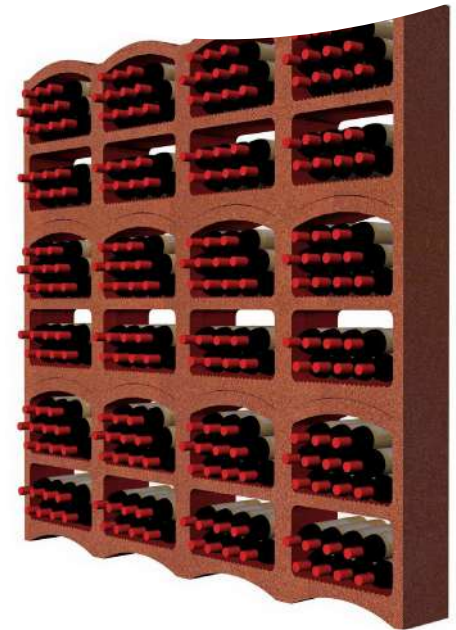
## FURNISHING AND ACCESSORIES

ShoWine



## FURNISHING AND ACCESSORIES

ShoWine



ShoWine



to find out more:

**[www.italian-consulting.com](http://www.italian-consulting.com)**

Orietta Risi  
M. +39 3477226370

in partnership with:

**[www.showine.it](http://www.showine.it)**